

TSL20Nplus MANUAL

NISSAN AUTO LOCK SYSTEM

Thank you for purchasing the TSL20Nplus Auto Lock System. Please read this manual in its entirety before using the product. Be sure to store this manual in a safe place, as you may need to reference it in the future.

Ver. 03242014

PRECAUTIONS

PLEASE READ THOROUGHLY BEFORE USE

! WARNING

The included wire harness and connectors are specially made for the TSL20Nplus only. Please do not splice off the CAN or POWER wires, and do not use this harness or connector with any other device; otherwise, a short, fire, or vehicle breakdown may occur.

! DANGER Mishandling may cause bodily harm!

- This product locks and unlocks car doors only by car speed and gear position. This device will NOT unlock doors due to shock, impact, airbag inflation or car accidents.
- This product must only be used in compatible cars that have an Automatic Transmission. Installing into a manual/stick-shift vehicle could cause bodily harm or vehicle damage.
- NEVER install this product in the vehicle where it could obstruct moving parts like foot pedals, levers, gears, the steering mechanism, etc. Such obstruction could cause bodily harm, vehicle damage, and/or product damage.
- NEVER modify this product in any way. Such modifications could result in malfunction or situations where bodily harm, vehicle damage, and/or product damage could occur.
- ALWAYS install in accordance with this document. Non-standard installations can result in situations where bodily harm, vehicle damage, and/or product damage could occur.
- This product is not waterproof, splash-proof, or dust-proof. Take care to prevent water, dirt, oil and other impurities from entering the product; otherwise malfunction to the product could occur, as well as vehicle damage and possible bodily harm.
- NEVER leave this product's wiring to be loose or mounted in such a way it could be caught or smashed by something, resulting in an electric short that could cause damage to the product, to the car, and/or bodily harm.

! NOTE Product or vehicle failure could result from ignoring the following:

- This product is primarily intended for use on Japanese vehicles within Japan.
- NEVER store or mount this product where water, oil, dirt, or moisture collects, or where there is intense heat or steam present. Such may cause product failure.
- This product is primarily intended for sale at domestic Japanese car dealerships.
- Our company shall not be held liable for traffic accidents that occur with the TSL20Np installed.
- Specifications of this product are subject to change without notice.
- ALWAYS confirm that your installer has appropriate expertise and equipment to safely and properly install this product.

! OPERATIONAL NOTES

- This product does not have any safety features that will unlock doors in the event of a car accident or strong shock. Do not rely on this product for door unlocking in those cases!
- This product only Locks the doors when the vehicle speed exceeds 20~25km/h and Unlocks doors when the gear is shifted back to the "P" (Park) position. It also Unlocks 9 seconds after very hard braking while traveling at 20km/h or faster. But please note there is no Relock feature if you Unlock while driving faster than 20km/h.
- Your car's speedometer may show a speed slightly higher than 20km/h when the TSL20Nplus automatically Locks. That is because some NISSAN cars are designed to show a slightly higher speed on the speedometer relative to the actual speed of the car.
- The TSL20Np is not intended for use on manual transmission cars, even if you find it works.
- The TSL20Nplus shall not be used as an excuse by the user for traffic accidents, nor shall any blame be assigned to our company for such accidents.
- In some rare cases, brief noise may appear on your automotive TV (if powered by the car). Such noise results from movement of your car's door lock motors, not the TSL20Nplus.

INSTALLATION GUIDE ON BACK

PRODUCT OPERATION

- Doors automatically **Lock** when car speed exceeds 20km/h.
- Doors automatically **Unlock** when gear returned to "P" position. Doors also **Unlock** 9 seconds after you brake hard while driving 20km/h or faster, after which doors will relock when accelerating to more than 20km/h.

NOTE#1: This product will not automatically Unlock in the event of a car accident.

NOTE#2: After you move the gear from "P" (park) to "D" (drive), if you manually Lock or Unlock the doors before the car speed reaches 20km/h, this product will not automatically Lock when the car's speed exceeds 20km/h.

NOTE#3: After the TSL20Nplus auto-locks your doors, if you manually Unlock, the TSL20Nplus will not relock your doors.

COMPATIBLE CARS

Install the TSL20Nplus **only** in the vehicles listed below. Do not install in vehicles not listed, as such could pose a hazard to the product, to the car, and/or to the human body.

- **NV200 Vanette** (Evalia, Chevrolet City Express) [M20]
- **NV350 Caravan** [E26]
- **X-Trail** [T31]
- **Elgrand** [E51 / E52]
- **Cube** [Z11 / Z12]
- **Sylphy** [TB17]
- **Juke** [F15]
- **Serena** [C25 / C26]
- **Teana** (Cefiro, Maxima) [J32]
- **Tiida** (Versa) [C11]
- **Dualis** (Qashqai) [J10]
- **Note** [E11 / E12]
- **Fuga** (Infinity M) [Y50]
- **March** (Micra) [K12 / K13]
- **Murano** [Z50 / Z51]
- **Leaf** [ZE0]

NOTE#1: Even if your car is on the above chart, a "minor change" by the car manufacturer on the newest car model could cause the CAN signals to become incompatible with the TSL20N. Please visit our TSL20N web page for the newest edition compatibility chart.

NOTE#2: If you own a NISSAN car outside Japan, we cannot guarantee compatibility if your NISSAN was not manufactured in Japan. CAN signals could be different.

PRODUCT SPECIFICATIONS

Operational Voltage	+12Vdc
Absolute Max./Min. Voltages	+9Vdc ~ +30Vdc
Current Consumption	< 4.5mA (while CAN sleeping)
Oper. Ambient Temp. Range (no condensation)	-25°C ~ +85°C

WARRANTY TERMS

- 1) Warranty period is measured as one (1) year from date of purchase.
- 2) In the unlikely event of product failure during normal use (as defined by this manual), the product will be repaired or replaced free of charge, but only at the original dealer/place of purchase. Demand for onsite repairs may be met in some cases within Japan, but onsite service fees will apply and vary by location.
- 3) All warranty claims must be submitted through the vendor from whom you originally purchased this product. You must fill out the form on the front page of this manual, and submit the dated purchase receipt.
- 4) You can only submit warranty claims to us if you have moved and can no longer visit your TSL20Nplus dealer.
- 5) Customer bears the cost of removal/reinstallation fees, as well as return shipping if not hand-delivered.
- 6) Regardless of being covered under Warranty, the following cases resulting in malfunction will require a fee:
 - Oil, water, dust, etc. having accumulated inside and on the electronics.
 - Improper installation or carelessness by the user.
 - Unauthorized product repair or modification.
 - Accidental drops, falls or other strong impact.
 - Fire, earthquake, flood, lightning, tornadoes, other natural disasters, as well as pollution, salt-air damage, etc.
 - When used outside the intended use, as specified in this manual.
 - Car accidents, vandalism or theft.
 - Problems due to deficiencies in this manual, or if you do something this manual doesn't specifically prohibit.
 - And cases where you do not properly fill out your claim, provide false info., and/or lack a dated receipt.
- 7) This warranty is only valid for TSL20Nplus users outside Japan with express written approval from KIRAMEK.
- 8) We cannot reissue printed documents free of charge. Please keep this document safe and do not lose it.

PLEASE NOTE:

Product repair or replacement is guaranteed under the terms, conditions and duration of this warranty. This warranty does not limit your legal rights. If you have questions or problems after this one (1) year warranty has expired, please consult with the original dealer from whom you purchased the TSL20Nplus product.

Because your warranty claim will be invalidated by an improperly filled out PRODUCT WARRANTY CLAIM card, please carefully confirm all entries and/or consult with your TSL20Nplus dealer before submission.

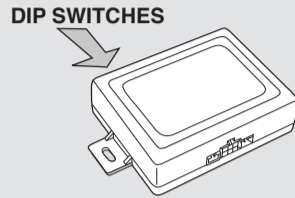
3-STEP INSTALLATION

- 1 Set vehicle compatibility DIP switch to match your car.
Refer to "VEHICLE SELECTION" below.
- 2 Connect the TSL20N's OBD2 plug to the car's OBD2 plug.
Refer to "OBD CONNECTION" at right.
- 3 Use DIP SW#6 to confirm CAN signal compatibility.
Refer to "VEHICLE CONFIRMATION" at bottom right.

1 VEHICLE SELECTION

Find your car in the table below and adjust the DIP switches accordingly.

The location of the DIP switches is shown in the diagram at right.

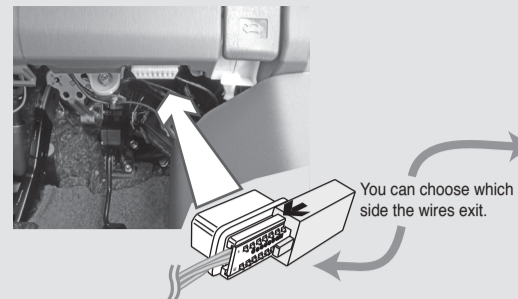


FAMILY	COMPATIBLE VEHICLES	DIP Setting
1	Dualis (Qashqai*) [J10] X-Trail [T31] Serena [C25] Cube [Z12] March (Micra*) [K13] Murano [Z51] Teana (Cefiro*, Maxima*) [J32]	
2	Elgrand [E51] Murano [Z50]	
3	Note [E11]	
4	March (Micra*) [K12] NV200 Vanette (Evalia*, Chevy City Exp.*) [M20]	
5	Elgrand [E52] NV350 Caravan [E26] Serena [C26] Juke [F15] Leaf [ZE0] Note [E12] Sylphy [TB17]	
6	Cube [Z11]	
7	Fuga (Infinity M*) [Y50]	
8	Tiida (Versa*) [C11]	

* Car name outside Japan. TSL20N should work if these cars were made in Japan, but we have not confirmed compatibility.

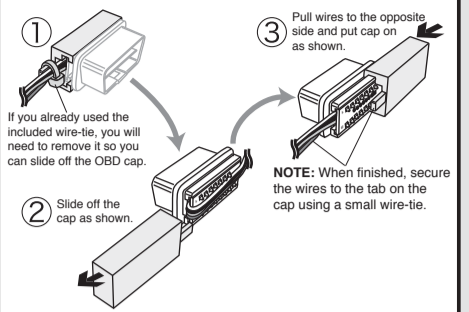
- On many Nissan cars, there is a factory cover over the OBD plug. Installation is still possible, but you may need to remove the factory OBD from it's mount in order to connect to the TSL20N's OBD plug. See the notes on the Compatibility Table on our TSL20Nplus web page for more details.
- If you find the above DIP SW settings don't work, try a different Family setting.

2 OBD CONNECTION



Connect to the car's OBD as shown above.

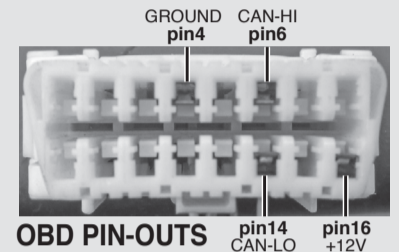
OBD plug: choosing which side wires exit



NOTE: If the vehicle's OBD plug is already being used or if there is no space to attach the TSL20N's OBD plug, you can either purchase our optional **OB-23** splitter cable, or you can purchase our Posi-Tap connector 4-pack (p/n **NT-4**.) We don't recommend soldered connections. You would be surprised to know how many badly soldered connections result in problems!

TSL20N WIRE HARNESS

Color	Description
RED	+12V
BLK	GND
BRN/RED	CAN-HI
BRN	CAN-LO

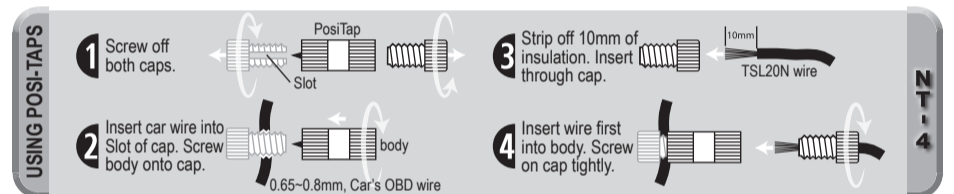


OPTIONAL PARTS



PosiTap 4-pack
NT-4
MRSP ¥800 (tax not included)

Compatible Wire:
0.65~0.8mm JAN:4571114022937



3 FINAL SETUP

DIP Switch #6 must be used as shown below to enable the TSL20N to function on the chosen car. (DIP Switches #1 ~ #5 should have been set for your car in Step-1.)

- 1 Turn on the Ignition.
- 2 Flip DIP SW #6 to ON.
- 3 Flip DIP SW #6 to OFF.

NOTE: When the above steps are finished, you never need to do them again for the same car, even if you disconnect the OBD plug, change your car's battery, etc. But if you move the TSL20N to a different car, you need to match the DIP Switches to that car and then repeat the above 3 steps.

Once you have completed all 3 Steps correctly, you simply need to hide the TSL20Nplus controller away from view and ensure you mount it so it does not interfere with the foot pedals or the car's moving parts. At that point, your installation is complete!

PRODUCT WARRANTY CLAIM

PRODUCT DESC.:	NISSAN Auto Lock System	MODEL:	TSL20Nplus
Warranty Period:	1 YEAR (validated only by dealer and/or dated proof of purchase)		
Date of Purchase*:	Year: _____, Month: _____, Day: _____		
Customer Info.*:	Name:		
	Address:		
	Phone:	Email:	
Seller Info.*:	Name:		
	Address:		
	Phone:	Website:	

* Please fill in these marked sections above completely.

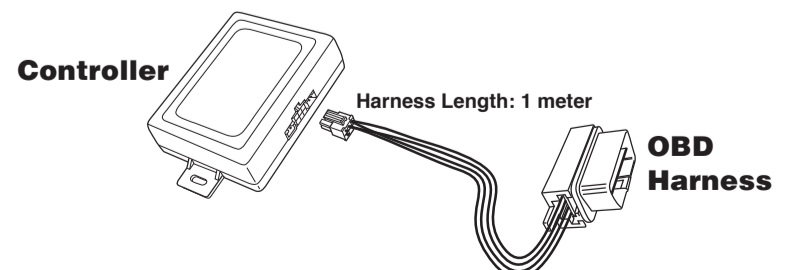
Approval Stamp

Manufacturer: KIRAMEK, Inc.
9-183-1 Itayama-cho,
Handa-shi, Aichi-Ken 475-0936 JAPAN

Contact TEL: +81-569-20-5585 (Operating Hours (ex. Sat./Sun./Holidays): 10:00AM ~ NOON, 1:00PM ~ 4:00PM)

NOTE: Warranty Claims not accepted without valid Approval Stamp and/or dated proof of purchase.

TSL20Nplus INCLUDED PARTS



NOTE: The RED & WHT 2-pin connectors, as well as the connector on the back side near the DIP switch block, are not used. Please do not connect anything to them.

Headlights momentarily turn off upon Lock & Unlock

We have received reports of headlights momentarily turning OFF then ON again whenever the TSL20N or TSL20Nplus automatically Locks or Unlocks. This seems to pertain to the vehicle's Auto Light setting features, which vary by vehicle.

Please refer to the table below. It has been reported that factory pre-programmed Auto Light Logic Settings 4 ~ 6 can result in a momentary ON/OFF of the headlights when the TSL20N Locks or Unlocks. Typically, changing to another Auto Light setting will resolve the problem, but such changes can only be made by a Nissan dealer.

If you experience the momentary ON/OFF of your headlights when using Auto Light, please consult with your Nissan dealer about changing to a different combination of settings that will resolve the issue to your satisfaction.

NISSAN Headlight & Auto-Light Related Settings

VEHICLE FEATURE	SETTING	DESCRIPTION
Headlight "Battery Saver" Setting	ON (*3)	Exterior Lamp Battery Saver Function AVAILABLE
	OFF	Exterior Lamp Battery Saver Function NOT AVAILABLE
Headlight Auto Light Modes (*1)	Mode1 (*3)	Normal
	Mode2	More sensitive than "Normal" (Lights faster)
	Mode3	More sensitive than "Mode2" (Lights even faster)
	Mode4	Less sensitive than "Normal" (Lights slower)
Auto Light Logic Settings (*2)	#1 (*3)	Dusk Sensing, Wipers tied to Auto Light function
	#2	Dusk Sensing, Wipers tied to Auto Light function (Only when Wiper switch is not "SW-INT.")
	#3	Dusk Sensing, Wipers NOT tied to Auto Light function
	#4 (*4)	NO Dusk Sensing, Wipers tied to Auto Light function
	#5 (*4)	NO Dusk Sensing, Wipers tied to Auto Light function (Only when Wiper switch is not "SW-INT.")
	#6 (*4)	NO Dusk Sensing, Wipers NOT tied to Auto Light function

(*1): These modes are not available on vehicles lacking an Auto Light function.

(*2): Settings exist on all vehicles but they only have effect when the vehicle has an Auto Light function. These settings can only be altered by your Nissan Dealer.

(*3): Factory Default Setting

(*4): These 3 settings potentially cause the Headlight ON/OFF flicker when the TSL20N Locks/Unlocks.